



BN

Bhavishya Nirman

HOME FOR BETTER LIFE

**BHAVISHYA NIRMAN
DEVELOPERS**



<https://www.bhavishyanirman.com/>



9899550700



LOCATION ADVANTAGES

Hospitals

FORTIS HOSPITAL
BABA NAGPAL HOSPITAL
ILBS HOSPITAL
NANDA HOSPITAL

Schools

ROSE VELLEY PUBLIC SCHOOL
ST. PAULS SCHOOL
HERITAGE PUBLIC SCHOOL
SARDAR PATEL SCHOOL

Connectivity

CHATTARPUR METRO
SULTANPUR METRO
GHITORNI METRO STATION
INDIRA GANDHI INTERNATIONAL AIRPORT

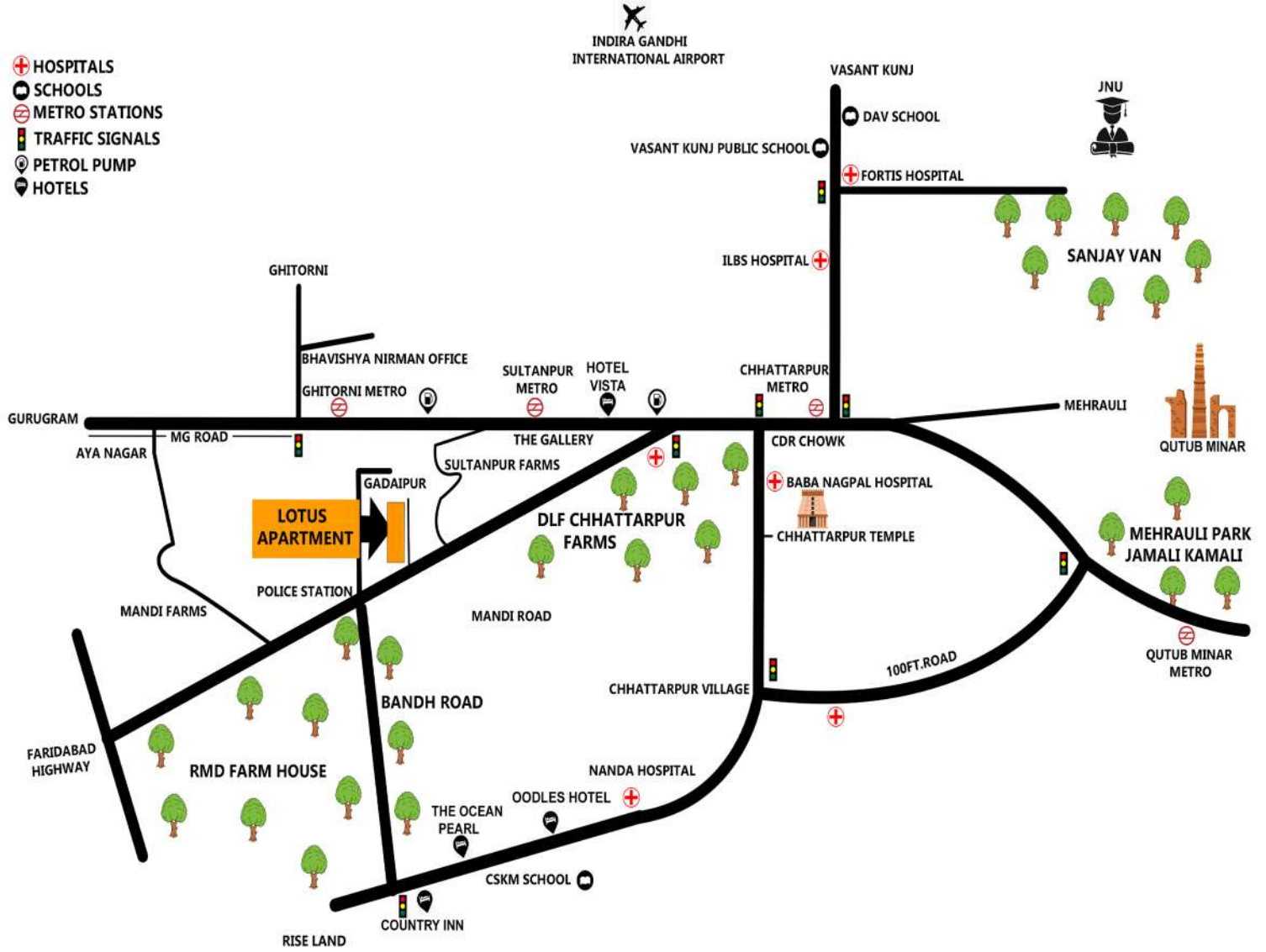
Restaurants

SARTHAK
ROUTINE AFFAIRE
BARISTA

hotels

COUNTRY INN
THE OCEAN PEARL
OODLES HOTEL
HOTEL VISTA

-  HOSPITALS
-  SCHOOLS
-  METRO STATIONS
-  TRAFFIC SIGNALS
-  PETROL PUMP
-  HOTELS



AMENITIES



**Modular
kitchen**



**1 Year
maintenance free**



Terrace Garden



Branded Lift



Car parking



Jaguar fitting



Wardrobes



**Gated
community**





TOWER 1



TOWER 1

SITE PLAN



2 BHK
FLOOR PLAN



UNIT -06
2BHK

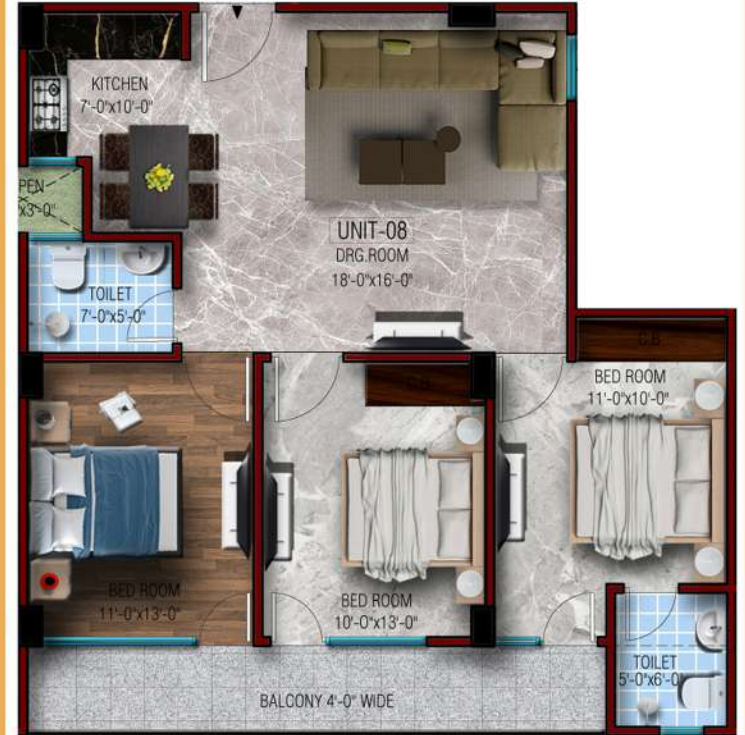


UNIT -07
2BHK

3 BHK FLOOR PLAN



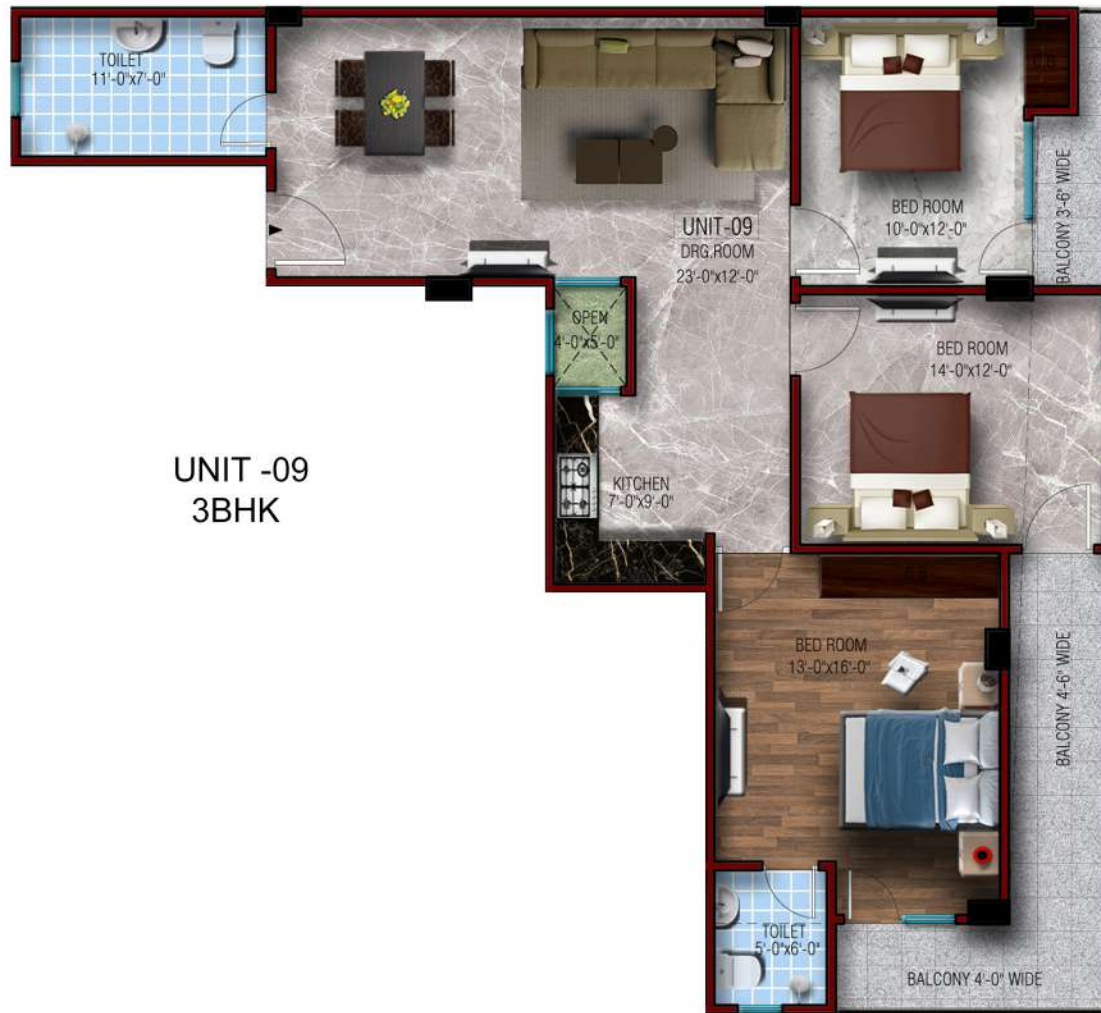
UNIT -05
3BHK



UNIT -08
3BHK

3 BHK
FLOOR PLAN

UNIT -09
3BHK



TOWER 2



SITE PLAN



2 BHK
FLOOR PLAN



UNIT -02
2BHK



UNIT -03
2BHK

3 BHK
FLOOR PLAN



UNIT-01
3BHK

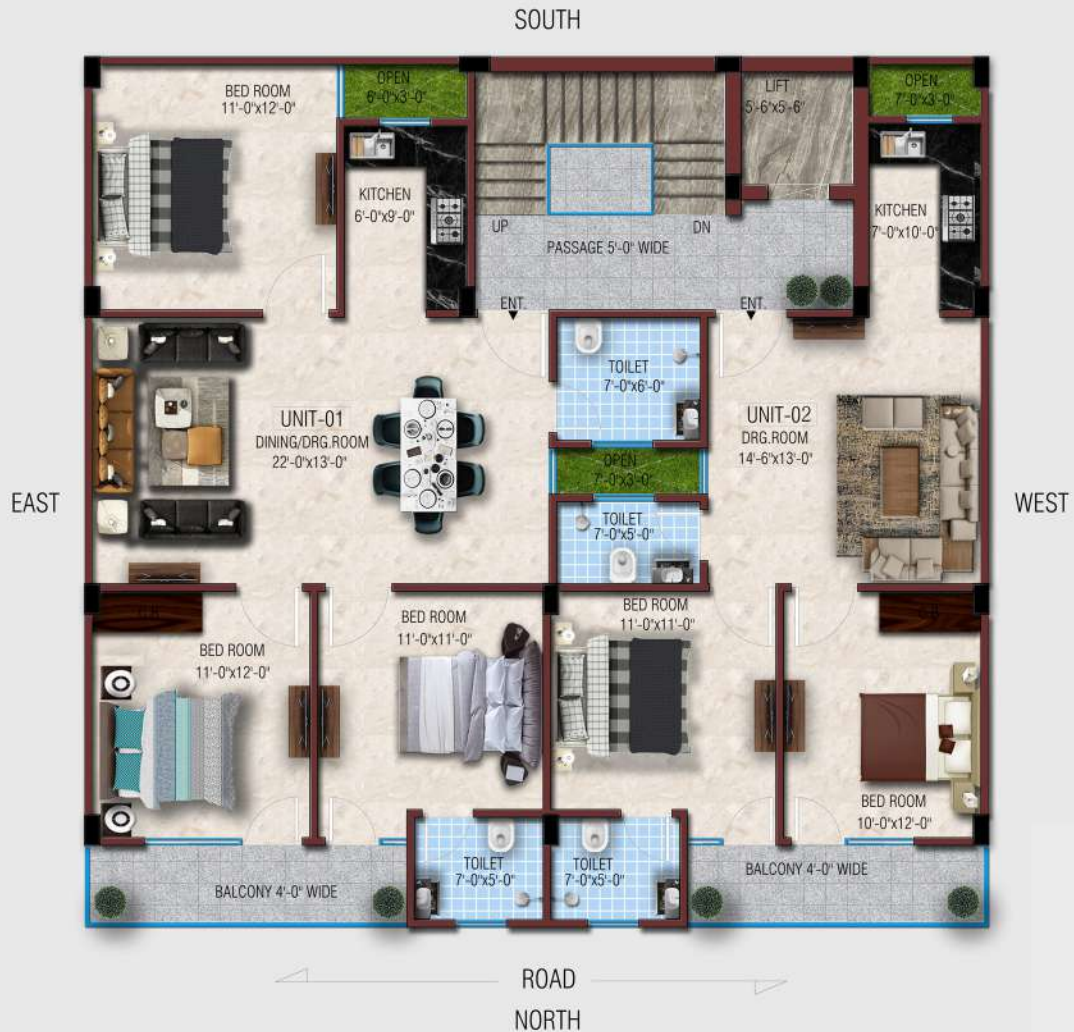


UNIT-04
3BHK

TOWER 3



SITE PLAN



3 BHK
FLOOR PLAN



UNIT -01
3BHK



UNIT -02
3BHK

SPECIAL FEATURES



REGISTRY



Loan available



TERRACE GARDEN

SPECIFICATION

DRAWING/DINNING ROOM



FLOOR
(AS PER
ARCHITECTURE)



CEILING
(FALL CEILLING)



WALL

BALCONIES



FLOOR
(AS PER
ARCHITECTURE)



RAILING

BEDROOM



FLOOR
(AS PER
ARCHITECTURE)



CEILING
(FALL CEILLING)



WALL

TERRACE



KITCHEN



FLOOR
(AS PER
ARCHITECTURE)



CEILING / WALL
(FALL CEILLING)



FITTING & FIXTURES
(JAGUAR)

TOILET & BATH



FLOOR
(AS PER
ARCHITECTURE)



CEILING
(PVC PANNEL)



WALL



FITTING & FIXTURES
(JAGUAR)

DOOR & WINDOW



MAIN & INTERNAL
DOOR FRAME
(WOODEN)



INTERNAL
DOOR SHUTTER
(WOODEN)



INTERNAL DOOR
& WINDOW
(WOODEN)

ELECTRICAL



WIRING
(HAVELLS OR
KALINGA GOLD)



SWITCH BOARD
(HAVELLS)



FANCY LIGHT

SECURITY



CCTV



SECURITY

ABOUT US

Over 18+ years, we are specialized in building your Bhavishya Nirman .and we trust that interest is always better than perfection.

Through our exemplary efficiency and commitment to project delivery, we strive to etch ourselves into the annals of residential architecture in India. Reshaping the landscapes of both affordable and luxury housing with our high-quality construction methods. Deals in Luxury Housing Amenities in Affordable Price .we execute the art of laying successful foundations, both for glorious businesses as well as evergreen structures. We are powered by an ever-innovating team of professionals with an endeavour to fulfill expectations of our associates, partners and most importantly, customers. Positioned in the lavish neighbourhoods of South Delhi (Chhatarpur, Mandi, Gadaipur),Ghitorni & Gurugram. The prime location makes connectivity and living effortless. Bhavishya Nirman is dedicated to upgrading your lifestyle and providing you with a home that you will fall in love with. The residencies are well furnished with top-notch amenities.

CONTACT US



OFFICE No. 1, 4TH FLOOR, KHASRA NO. 393/1 ,
NEAR CHOUDHARY DHABA, MAIN MARKET, GHITORNI,
NEW DELHI , 110030.



[HTTPS://WWW.FACEBOOK.COM/BHAVISHYA.NIRMAN12](https://www.facebook.com/BHAVISHYA.NIRMAN12)



[HTTPS://WWW.INSTAGRAM.COM/BHAVISHYANIRMAN_OFFICIAL/](https://www.instagram.com/BHAVISHYANIRMAN_OFFICIAL/)



[HTTPS://WWW.BHAVISHYANIRMAN.COM/](https://www.bhavishyanirman.com/)



9899550700

